

# FEBRUARY

# TRAINING/INTERNSHIP

## Program

04 feb to 27 feb 2026



[WWW.PARINDEYFOUNDATIONS.COM](http://WWW.PARINDEYFOUNDATIONS.COM)

# Table Of Content

Introduction	<b>03</b>
Forensic	<b>04</b>
Clinical+Counseling	<b>05</b>
Neuropsychology	<b>06</b>
Industrial Psychology	<b>07</b>
Real Research Conduct	<b>08-10</b>
Schedule	<b>11</b>
Pricing	<b>12</b>
Discount	



# Introduction to Program

## Parindey Group Presents Feb Internship Program 2025 (F.I.P)

*Duration: 4th Feb – 27<sup>th</sup> Feb 2026 (8<sup>th</sup>  
March for Research)*

*Mode: Online / Live Sessions by  
Foundation Faculty*

### About the Program:

Parindey Foundation invites applications for its Feb Internship Program 2026, designed to provide in-depth training and exposure to key domains of psychology. This 23-day internship aims to enhance participants' theoretical understanding and practical insight under the guidance of our expert faculty.

Specialized Training Streams:

1. Forensic Psychology
2. Clinical & Counseling Psychology
3. Neuropsychology
4. Industrial Psychology
5. Real Research Conducted

Through interactive sessions, real-world case discussions, and guided mentorship, students will broaden their knowledge and strengthen their foundation for advanced studies and professional practice in psychology.



**Parindey Group**  
MENTAL HEALTH SIMPLIFIED

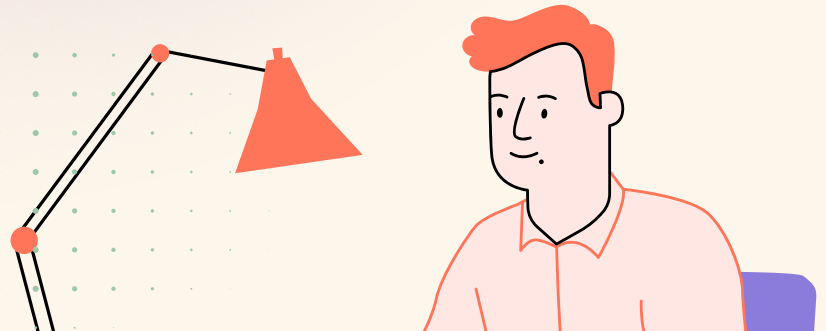
# Forensic Psychology

## Introduction

Explore the intersection of psychology and law. This course introduces students to criminal behavior, investigation techniques, lie detection, and correctional systems, helping them understand how psychological science aids justice and crime prevention.

## Key Concepts

- Intro to Forensic Psychology & History – Evolution, scope, and roles.
- Psychology & Legal System – Law, ethics, and expert testimony.
- Medical Forensics – Mental health assessment and medico-legal aspects.
- Criminology – Theories of crime and offender behavior.
- Victimology – Trauma response and victim support.
- Investigative Psychology – Profiling, behavioral clues, and crime analysis.
- Interrogative Psychology – Psychology of interrogation and confessions.
- Lie Detection – Polygraph, narco-analysis, and deception cues.
- Correctional Psychology – Rehabilitation and reformative justice.





# Clinical + Counseling Psychology

## Introduction

Gain insight into human behavior and emotional well-being. This program covers assessment, diagnosis, and therapeutic techniques like CBT and REBT, preparing learners to understand, support, and guide individuals toward mental health recovery.

## Key Concept

- Introduction & Scope – Understanding clinical and counseling roles.
- Mental Health Assessment – MSE, case history, and psychometrics.
- Common Psychological Disorders – Anxiety, depression, and OCD.
- Therapeutic Approaches – CBT, REBT, and humanistic models.
- Client-Centered Counseling – Building rapport and empathy.
- Case Formulation – Assessment to treatment planning.
- Follow-Up & Relapse Prevention – Handling recurring symptoms.
- Ethics in Practice – Confidentiality and professional conduct.
- Recent Trends – Integrative and holistic therapy models.



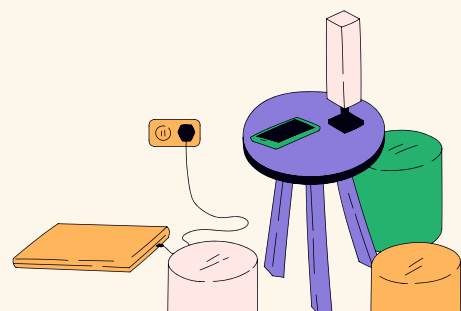
# Neuro- Psychology

## Introduction

Neuropsychology is a specialized branch of psychology that explores the relationship between the brain, nervous system, and human behavior. It integrates principles from psychology, neuroscience, and medicine to understand how brain structures and functions influence cognition, emotion.

## Key Concept

- Brain–Behavior Relationship
- Neuroanatomy & Neurophysiology
- Cognitive Functions
- Neurological Disorders
- Neuropsychological Assessment
- Emotional & Behavioral Changes
- Neuroplasticity
- Clinical & Rehabilitation Applications
- Anatomy & Physiology of the Brain
- Understanding Pathophysiology
- Case Evaluation





# Industrial Psychology

## • Introduction

Industrial Psychology, also known as Industrial–Organizational Psychology, is a branch of psychology that applies psychological principles to the workplace. It focuses on understanding human behavior at work to improve employee performance.

## • Key Concept

- Introduction & Overview
- Intersection of Psychology
- Workplace Behavior
- Motivation & Performance.
- Leadership & Management
- Employee Selection & Assessment.
- Training & Development
- Job Satisfaction & Wellbeing
- Organizational Culture & Climate
- Diversity & Inclusion
- Performance Appraisal
- Future of Work



# Research in Psychology

## • Introduction

Research in psychology classes will include the basics of research and real research, with all parts of research. The topic of research will be decided on basis of majority

## • Key Concept

- Basics of research
- Finalization of research topic
- Introduction framing
- Review of Literature
- Questionnaire formation
- Data collection
- Data Evaluation
- Research question conclusion
- Conclusion
- Evaluation
- Errors in research
- Presentation of research





# Schedule

<b>04 Feb 2026</b> orientation for all Internship 06:30 to 07:30 PM	<b>05 Feb 2026</b> <ul style="list-style-type: none"><li>Forensic Psychology (06:00 to 07:00 PM)</li><li>Clinical + Counseling (07:00 to 08:00 PM)</li><li>Research (08:00 to 09:00 PM)</li></ul>
<b>06 Feb 2026</b> <ul style="list-style-type: none"><li>Neuropsychology (06:00 to 07:00 PM)</li><li>Industrial Psychology (07:00 to 08:00 PM)</li><li>Research (08:00 to 09:00 PM)</li></ul>	<b>07 Feb 2026</b> <ul style="list-style-type: none"><li>Forensic Psychology (06:00 to 07:00 PM)</li><li>Clinical + Counseling (07:00 to 08:00 PM)</li></ul>
<b>08 Feb 2026</b> <ul style="list-style-type: none"><li>Neuropsychology (06:00 to 07:00 PM)</li><li>Industrial Psychology (07:00 to 08:00 PM)</li></ul>	<b>09 Feb 2026</b> <ul style="list-style-type: none"><li>Forensic Psychology (06:00 to 07:00 PM)</li><li>Clinical + Counseling (07:00 to 08:00 PM)</li><li>Research (08:00 to 09:00 PM)</li></ul>
<b>10 Feb 2026</b> <ul style="list-style-type: none"><li>Neuropsychology (06:00 to 07:00 PM)</li><li>Trauma Focused Psychology (07:00 to 08:00 PM)</li></ul>	<b>11 Feb 2026</b> <ul style="list-style-type: none"><li>Forensic Psychology (06:00 to 07:00 PM)</li><li>Clinical + Counseling (07:00 to 08:00 PM)</li></ul>

# Schedule

## 12 Feb 2026

- Neuropsychology  
(06:00 to 07:00 PM)
- Industrial Psychology  
(07:00 to 08:00 PM)
- Research  
(08:00 to 09:00 PM)

## 13 Feb 2026

- Assignment

## 14 Feb 2026

- Assignment

## 15 Feb 2026

- Forensic Psychology  
(06:00 to 07:00 PM)
- Clinical + Counseling  
(07:00 to 08:00 PM)

## 16 Feb 2026

- Neuropsychology  
(06:00 to 07:00 PM)
- Industrial Psychology  
(07:00 to 08:00 PM)
- Research  
(08:00 to 09:00 PM)

## 17 Feb 2026

- Forensic Psychology  
(06:00 to 07:00 PM)
- Clinical + Counseling  
(07:00 to 08:00 PM)
- Research  
(08:00 to 09:00 PM)

## 18 Feb 2026

- Neuropsychology  
(06:00 to 07:00 PM)
- Industrial Psychology  
(07:00 to 08:00 PM)

## 19 Feb 2026

- Forensic Psychology  
(06:00 to 07:00 PM)
- Clinical + Counseling  
(07:00 to 08:00 PM)



# Schedule

## 22 Feb 2026

- Neuropsychology  
(06:00 to 07:00 PM)
- Industrial Psychology  
(07:00 to 08:00 PM)

## 23 Feb 2026

- Forensic Psychology  
(06:00 to 07:00 PM)
- Clinical + Counseling  
(07:00 to 08:00 PM)
- Research  
(08:00 to 09:00 PM)

## 24 Feb 2026

- Neuropsychology  
(06:00 to 07:00 PM)
- Industrial Psychology  
(07:00 to 08:00 PM)

## 25 Feb 2026

- Doubt session common for all  
except research  
06:00 to 07:00 PM
- Research  
07:00 to 08:00 PM

## 26 Feb 2026

- Neuropsychology Test  
(06:00 to 07:00 PM)
- Industrial Psychology Test  
(07:00 to 08:00 PM)

## 27 Feb 2026

- Clinical & Counsel Psychology  
Test  
(06:00 to 07:00 PM)
- Forensic Psychology Test  
(07:00 to 08:00 PM)

## 28 Feb 2026

- Research  
(07:00 to 08:00 PM)

## 02 Mar 2026

- Research  
(07:00 to 08:00 PM)

# Schedule

**05 Mar 2026**

- Research  
(07:00 to 08:00 PM)

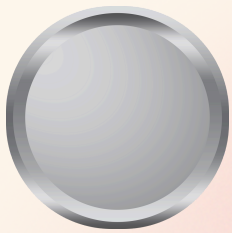
**08 Mar 2026**

- Research  
(07:00 to 08:00 PM)



# Pricing of Internship

## Silver Package



- Choose any two internship subject (eg Research & Clinical + Counseling Psychology)
- Price:-₹3000/-

## Gold Package



- Choose any two to three internship subject (eg Research & Clinical + Counseling Psychology+ Forensic)
- Hardcopy Certificate
- Price:-₹3400/-

## Platinum Package



- Choose any three to four internship subject
- Hardcopy Certificate
- Access to recordings
- Price:-₹3800/-

# DISCOUNTS FOR YOU

## Register by 14 Jan 2026

- Silver at ₹2000/- (Individual)
- Gold at ₹2700/- (Individual)
- Platinum at ₹2900/- (Individual)

## Register 14-21 Jan 2026

- Silver at ₹2700/- (Individual)
- Gold at ₹2900/- (Individual)
- Platinum at ₹3100/- (Individual)

**After 21-27 Jan 2026 Rs 200 will be extra on 14-21 pack**

## Group Discounts

### By 14 Jan 2026

- Silver at ₹1800/- person (Group of 3)
- Gold at ₹2500/- person (Group of 3)
- Platinum at ₹2800/- person (Group of 3)
- Silver at ₹1700/- person (Group of 3 +)
- Gold at ₹2300/- person (Group of 3 +)
- Platinum at ₹2600/- person (Group of 3 +)

### 14-21 Jan 2026

- Silver at ₹2500/- person (Group of 3)
- Gold at ₹2700/- person (Group of 3)
- Platinum at ₹2900/- person (Group of 3)
- Silver at ₹2200/- person (Group of 3 +)
- Gold at ₹2300/- person (Group of 3 +)
- Platinum at ₹2400/- person (Group of 3 +)

**For a group of 8+ whatsapp +91 7014643296**



# PROGRAM IN PSYCHOLOGY

## FOR FUTURE PSYCHOLOGIST

### For more info

- Whatsapp call centre :- +91 7014643296
- Email:- parindeyecourses@gmail.com

### A Program Powered by:-



### Program by:-

- Parindey Institute of Mental Wellness (P.I.M.S) & E-Courses

# ***THE PARINDEY GROUP***